



Make a bigger impact at your events with

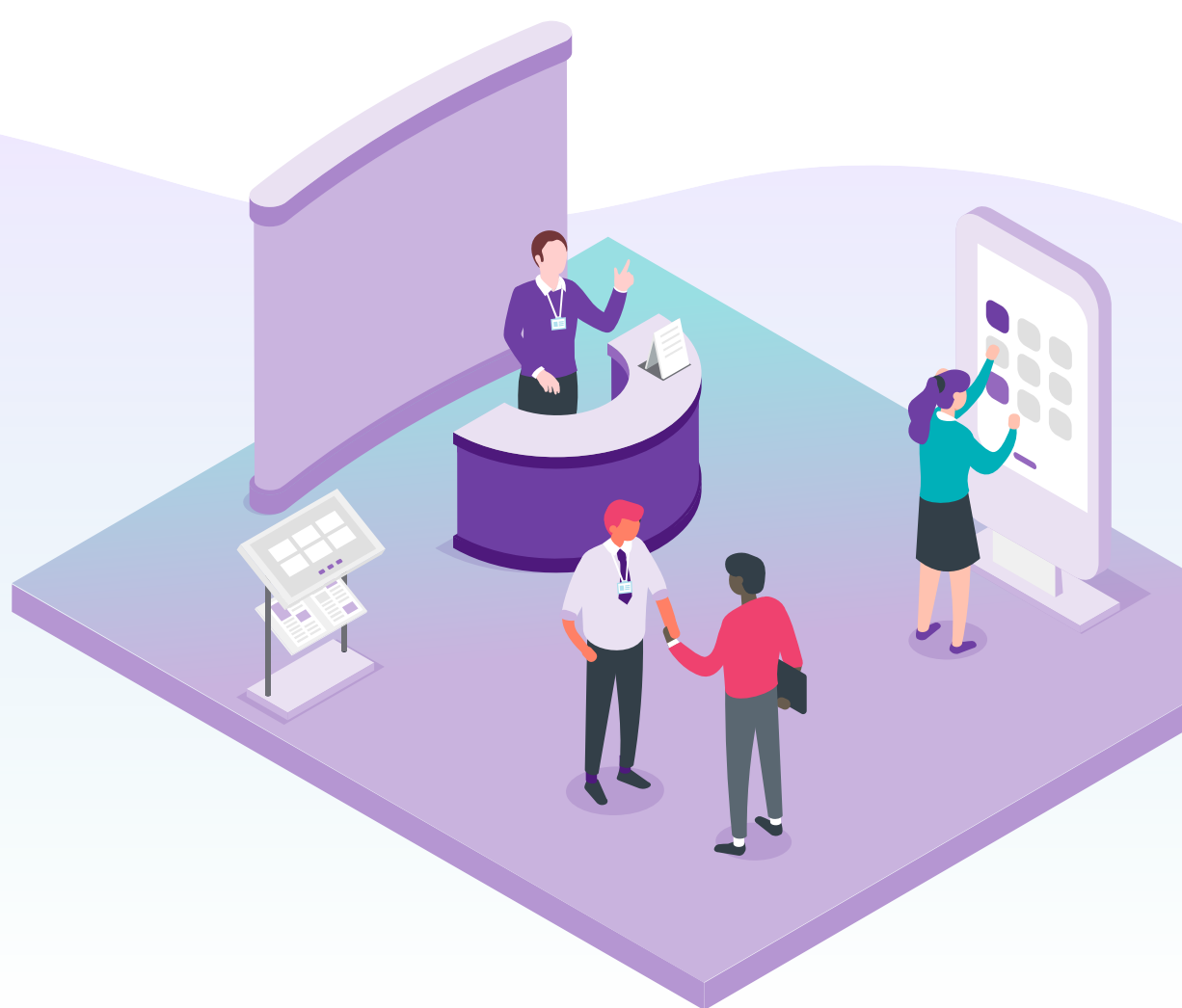
Aptify + Expo Logic

Deliver the ultimate member experience at your events. Complex membership organizations know the importance of using powerful event technology to streamline efficiency both for staff and members. Sit back and watch your in-person events run more smoothly with **Aptify** and **Expo Logic's** integrated event technology that adapts to your needs.

According to our recent survey

80%

of event planners from all industries use event technology.



Whether you plan to attract new members or retain current ones, find out how event technology can drive more member value at your events.



▶ Offer fast track registration

Manage the lifecycle of any size event or trade show – from planning and logistics to project management, budgeting, and registration. Monitor your success with real-time reporting and dashboards. Setup **Engagement Scoring** to track members who attend the event and how that affects their lifetime member journey.



🗓️ Streamline exhibition planning and increase sponsorship revenue

GoExpo's online shopping experience makes it easy for sponsors and exhibitors to purchase booth space, list upgrades and promotional/sponsorship opportunities, and more.

🌟 Ensure a speedy onsite check-in

Set the record for the fastest check-in by pairing QR codes with your event's registration. Members can self-check-in at the event by scanning their QR code or typing in their name. **Expo Logic's Badge[On]Demand** will automatically print the member's badge without the help of event staff.

👤 Create better connections

Simplify networking opportunities by allowing exhibitors to scan members' badges to eliminate the need for a member to provide a business card. Exhibitors can then follow up with attendees through the captured contact information stored in their **lead retrieval solution**.

🏆 Help members find exhibitors faster

Have your members access a **digital floor plan** to navigate the exhibit halls without wasting time so your exhibitors can meet more members.

💬 Get members into sessions and networking events faster

Give attendees the gift of convenience at your next event. Cut time in half by allowing attendees to simply scan their badges onsite for session check-in and check-out through **TrackPod**.

📄 Issue automatic credit

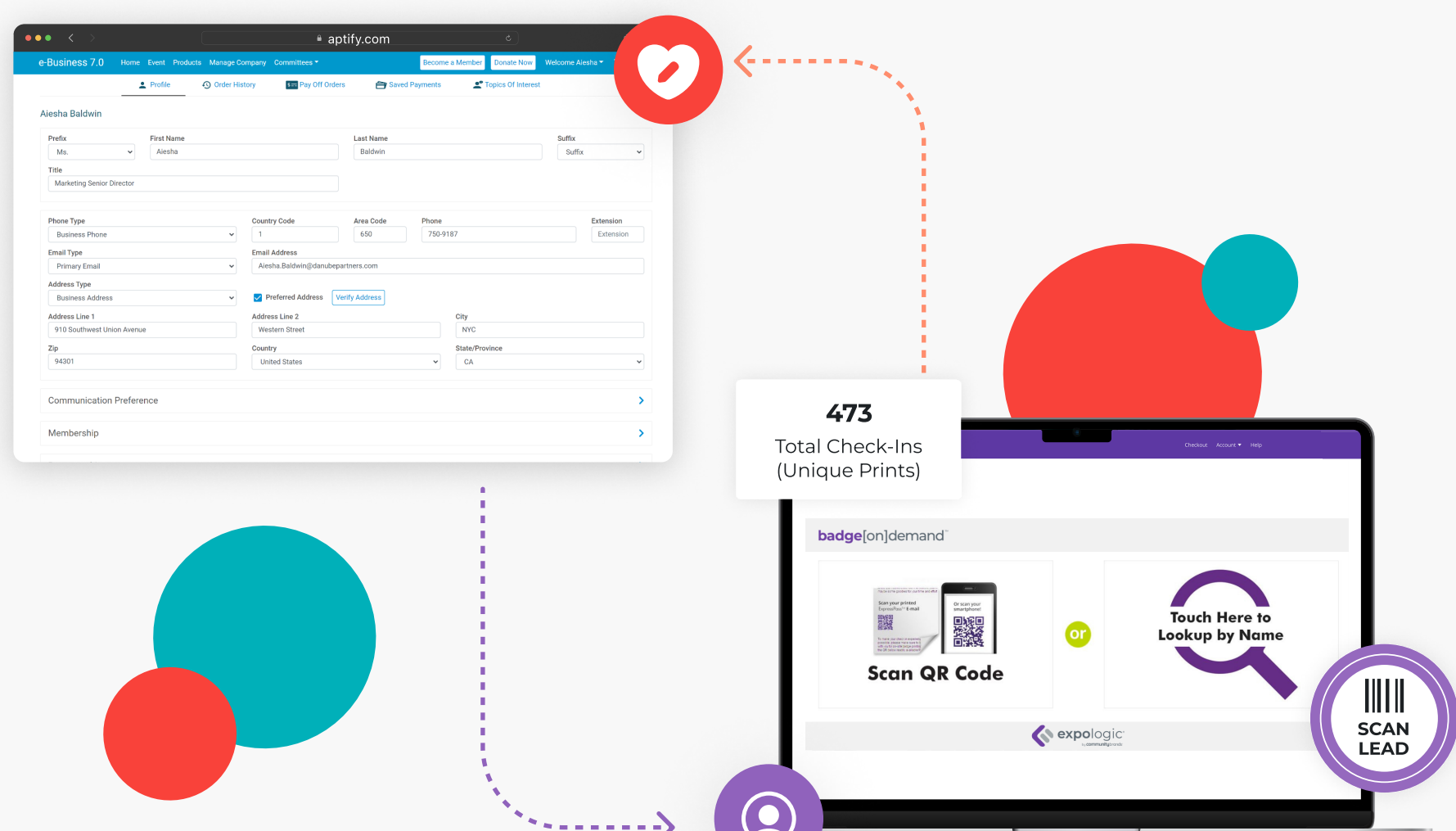
Ensure that members properly get the credit they deserve for attending a session or networking event. With just one scan from a member's badge, **TrackPod** captures the member's presence. Credit is then awarded to that member under their Aptify profile.

📊 Harness the power of post-event data

Translate event data into trends viewed on an analytics dashboard to maximize your planning of future events.

Integrated solutions to transform the event experience

Events and networking are two of the top drivers of member engagement. Leverage Aptify to create event experiences that are personalized and frictionless for members and attendees. Integrate Aptify with Expo Logic for a complete set of onsite event technology solutions to help you manage every aspect of your in-person event and apply key member insights to transform your attendee experience.



Create a seamless experience for your events from start to finish.

[Get a demo](#)